

Full Stack Application for Automated Expanse Calculator and Reimbursement System Using Deep Learning

J. Raja and Manigandan K.

Department of Computer Science and Engineering, School of Computing, Vel Tech Rangarajan Dr. Sagunthala R&D Institute of Science and Technology, Chennai, Tamil Nadu, India

Keywords: Full Stack Development, Mobile Apps, Expanse, Calculator, Deep Learning.

Abstract: The Representative Repayment Module is a significant part in corporate monetary administration, smoothing out the most common way of repaying workers for personal costs caused during business exercises. A cost guarantee, at its center, is a proper solicitation presented by a person to the organization or association, looking for repayment for different uses, for example, travel, feasts, convenience, transportation, office supplies, and other fundamental expenses. This component turns out to be especially fundamental in organizations where workers need direct admittance to corporate assets. In this cycle, representatives at first cover costs utilizing individual Visas or money and consequently submit nitty gritty cost guarantee structures for survey. The work process includes a two-level confirmation process, beginning with the chief who examines the exactness and authenticity of the representative's cost subtleties. Following this, the regulatory group directs an optional confirmation, guaranteeing the legitimacy of the chief's endorsement. This efficient methodology guarantees monetary straightforwardness as well as works with a consistent and responsible repayment process inside the association, adding to successful monetary administration and worker fulfillment.

1 INTRODUCTION

In the steadily developing domain of business, where versatility and proficiency are principal, the viable administration of cost repayment processes remains as a vital component in cultivating monetary reasonability and reinforcing worker happiness. Inside our coordinated framework, the Repayment Module arises as a foundation, decisively created to smooth out and upgrade the whole repayment work process. Designed for straightforwardness and speed, this module assumes a vital part in guaranteeing the exactness, straightforwardness, and adherence to hierarchical strategies in the repayment cycle. Workers benefit from an easy-to-use interface that works with consistent accommodation of repayment demands, introducing another period of proficiency by disposing of the requirement for lumbering administrative work. With a promise to a quick, paperless, and user-driven approach, our Repayment Module turns into an imperative device in gathering as well as unbelievable the assumptions for current business tasks. Cost Repayment is the manner in which organizations take care of their workers who

have spent their own cash on business-related costs (Michael Johnson 2021) and (Emily Brown 2020).

While repayments for business travel is very normal, representatives can likewise be repaid for training, medical services, and different costs caused for the association. Overseeing worker cost repayments can be a tedious and lumbering undertaking for associations. Be that as it may, with the appearance of computerized frameworks, the interaction has become substantially more effective and smoothed out. By carrying out a robotized worker cost repayment process, organizations can save important time and assets while guaranteeing exactness and straightforwardness in the repayment cycle (David Wilson 2019). Mechanization permits representatives to present their cost reports electronically, taking out the requirement for manual desk work and decreasing the possibilities of blunders or lost receipts. With a computerized framework, representatives can undoubtedly enter their costs, append computerized receipts, and present their repayment demands on the web. This works on the interaction for representatives as well as gives a unified stage to chiefs and money groups to survey and support the costs. Besides, computerized

representative cost repayment frameworks frequently accompany worked in arrangement consistence checks. These frameworks can approve cost claims against organization arrangements, guaranteeing that costs are inside as far as possible and consent to the association's rules. This forestalls false or resistant costs, giving more noteworthy control and perceivability over the repayment interaction (Manikandan Sridharan 2021).

The proposed Worker Repayment Framework addresses an extensive arrangement intended to reform and upgrade the administration of repayment processes inside our association. At its center, this framework is secured by an easy to understand interface that engages representatives to consistently submit repayment guarantees carefully, making way for a more productive and smoothed out work process. The Robotized Steering Module wisely guides these cases to the significant approvers in view of predefined standards or various leveled structures, limiting postponements and guaranteeing a quick endorsement process. Chairmen gain adaptability through the Cost Classification the Board Module, permitting simple customization of cost classifications to line up with explicit authoritative necessities and approaches. The Dashboard and Notice Module upgrades straightforwardness by giving constant following to workers, diminishing requests and encouraging better correspondence. Moreover, the Approach Consistence Module guarantees precision via consequently approving submitted costs against organization strategies before endorsement. Perceiving the versatile idea of work, the Portable Coordination Module presents an easy to use application, empowering in a hurry cost entries and photograph transfers for receipt catch. Together, these modules structure a firm framework ready to lift functional proficiency, precision, and representative fulfillment, eventually cultivating a more smoothed out and responsible repayment process (Sarah Garcia 2018) and (Rachel Lee 2019).

2 RELATED WORKS

Nupur Sawarkarl, Pranay Yenagandula (2022) We present a smart cost tracker to deal with the month to month expenses proficiently. Our framework will help every individual who are intending to know their costs and save from it. The client will be given the office to draw a month to month line and in the event that the client crosses that limit our application will tell the client about the equivalent. The client can give receipts as an info, utilizing man-made intelligence

our application will sort it into various classifications. Here client can likewise characterize their own classes like food, dress, lease and bills and the client can likewise draw certain lines for a specific classification. Client will be furnished with visual insights of costs by exchange date or by classification. This undertaking isn't indented for a specific client or age bunch however everybody who needs to follow their cost can utilize this application. Thus, the overall thought of this Task is to assist with peopling perspective and study their general consumption design by fostering a portable application to dissect every one of the buys made by the client by just checking the receipts (Mark Robinson 2017).

Emily Johnson's work gives an exhaustive examination of the procedures and advances utilized in mechanized representative cost repayment frameworks. It examines difficulties, advantages, and best practices in carrying out such frameworks. Bobbinpreet Kaur; Ayush Dogra (2022)- The outcome of an association relies on the fulfillment and trust of its partners. Representatives being one of the main resources of an association assumes a fundamental part for upliftment of an association. An association with higher maintenance proportion will be a fruitful one as far as accomplishing its objectives. As losing a Talented and prepared representative can upset the usefulness of an association as well as then again cause monetary misfortunes as for preparing expenses of new workers (S. Manikandan et al., 2022).

In this article we fabricated an AI based structure of Expectation of consistency standard of representatives for a coordinated utilizing a pre-procured dataset. The AI calculations utilized for advancement of model are Choice tree (DT), Gathering with helped tree, K-closest neighbor (KNN), Backing Vector machine (SVM). The component esteem types in the dataset are physically changed according to the necessity of the model to accomplish a thoroughly prepared model. The model subsequently evolved gave the precision pace of 98%. Priyanka Bankar, Rutuja Divate(2022)- Staff execution assessment Work is a bunch of exercises that are completed to decide the degree of execution (Murali N et al., 2024) and (Chris Taylor 2020). The execution of work or the examination of a representative's exhibition the motivation behind this paper is to portray how SKP Strategies for programming investigation and configuration were utilized to make an information the executive's framework for worker execution targets. Demonstrating for object perception with the Bound together Displaying Language and a Model View

Regulator strategy in light of an open source system of beginning (Andrew White 2018).

The expression "SKP evaluation examination" alludes to an Indonesian unofficial law that surveys the degree of execution achievement in view of quantitative variables, quality perspectives, timing, and cost that contrast the finish of the undertaking with the foreordained objective (Kevin Johnson 2019) and (Michelle Brown 2020). The review's discoveries have brought about the making of programming frameworks for the administration of SKP information frameworks, which was implicit agreement with the method's pertinent evaluation model (Cycle of producing expected target information and work) exercises of acknowledgment). The SKP information the board framework has been worked on because of this work. to further develop the board execution in managing information accessibility, checking prerequisites, and dynamic in light of execution and material policymakers (Saradhi Thommandru V et al., 2024) and (Amanda Wilson 2018).

3 EXPANSE CALCULATOR AUTOMATED PROCESS

The proposed Worker Repayment Module fills in as the key part in our obligation to functional productivity, accuracy, and representative fulfillment. This framework is intended to alter the repayment cycle by empowering advanced accommodation of cases, consequently guiding them to the suitable approvers in light of predefined standards or progressive systems. Directors will have the adaptability to characterize and modify cost classifications, adjusting them to explicit authoritative necessities and arrangements without any problem. To improve straightforwardness, a user-well-disposed dashboard and notice framework will be carried out, empowering workers to follow the ongoing status of their repayment demands and, in this manner, limiting requests. To guarantee consistence, the framework will highlight worked in functionalities that consequently survey submitted costs against organization arrangements and guidelines before endorsement. Moreover, perceiving the advancing idea of work, a versatile form or application will be created, enabling clients to submit costs in a hurry and working with the helpful catch of receipts through photograph transfers where conceivable. This complete methodology intends to smooth out the repayment cycle as well as raise client

experience, cultivating a more effective, responsible, and worker driven monetary administration framework inside the association. Figure 1 shows Employee Submission and Resubmission process. Table 1 shows the Processing Steps and Objectives for Training Set.

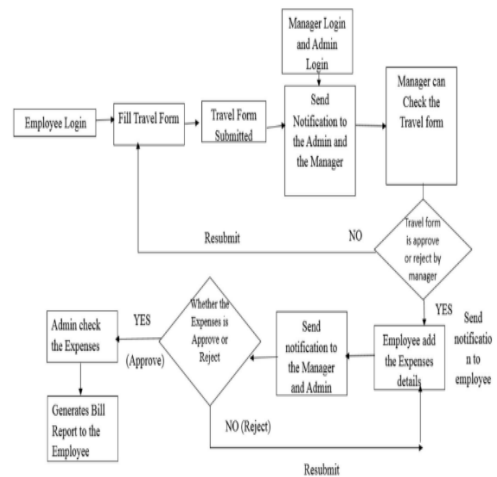


Figure 1: Employee submission and resubmission process.

Table 1: Processing steps and objectives for training set.

- To carry out a Mechanized Cost Repayment Framework to improve effectiveness and exactness in dealing with the State's movement advance and cost repayment program.
- The smooth out cost processes by including workers, directors, and overseers in a cooperative work to keep up with organization expenses really.
- In the further develop the general cost administration work process through the mix of a thorough arrangement that takes care of the requirements of representatives, chiefs, and heads.
- The guarantee straightforwardness and adherence to authoritative arrangements via computerizing the cost repayment process, limiting manual intercession.
- The work with consistent correspondence and check between representatives, supervisors, and executives to improve the general viability of the cost administration framework.

4 EXPERIMENTAL SETUP AND RESULTS

In this execution includes a staged rollout, with representative instructional meetings directed to acquaint clients with the new framework. The Robotized Steering Module is coordinated to proficiently coordinate repayment claims, while the Cost Classification the Executives Module is tweaked to line up with explicit authoritative requirements. The Dashboard and Warning Module is executed to give ongoing following, diminishing requests and improving straightforwardness. The Arrangement Consistence Module is coordinated to robotize cost approval, limiting blunders and guaranteeing adherence to organization approaches.

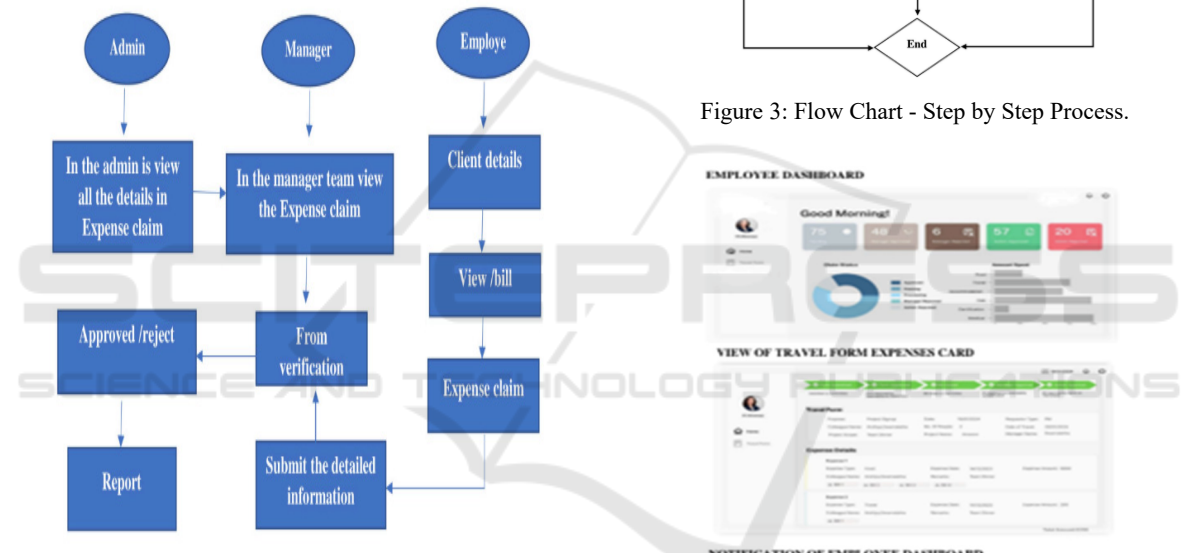


Figure 2: Submission system - Reporting and claim process.

A repayment framework plan, a few parts need thought to guarantee effective and secure tasks. The framework ought to have client verification and approval modules to oversee different client jobs like representatives, directors, and executives. Information capacity can be dealt with utilizing a data set like PostgreSQL, where cost related data like receipts, sums, endorsement status, and timestamps are put away. The backend can be created involving Java and Spring Boot to give Serene APIs to Muck procedure on cost information. Joining with outsider administrations like Firebase can be executed for document capacity and recovery. Figure 2 shows Submission System - reporting and Claim Process. And Figure 3 shows Flow Chart - Step by Step Process.

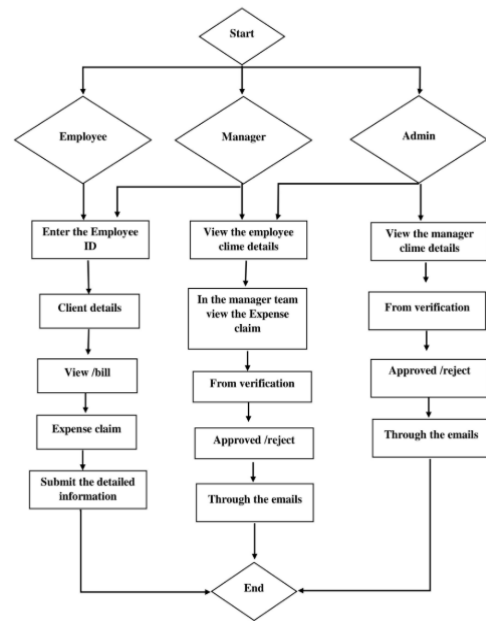


Figure 3: Flow Chart - Step by Step Process.



Figure 4: Full stack result - Implementation.

The frontend can be worked with React.js to make an easy to use interface for submitting cost claims,

seeing endorsement situations with, overseeing repayment work processes. A vigorous testing procedure utilizing devices like Mailman guarantees Programming interface usefulness and safety efforts, for example, information encryption and secure associations ought to be carried out to safeguard delicate client and monetary data. Also, logging and checking instruments can be gotten up in a position track framework exercises and recognize any oddities or execution issues. Figure 4 shows Full Stack Result Implementation.

5 CONCLUSIONS

In conclusion, the robust functionality contained within the Admin Module of the Employee Reimbursement System positions it to revolutionize and elevate our organization's expense reimbursement processes. Administrators can seamlessly overseas and control user accounts, ensuring access is secure and appropriate, by utilizing meticulous user management capabilities. Administrators can define and enforce expense policies, manage manager approval workflows, and seamlessly integrate with other organizational tools using the configuration modules. From fields to forms, this level of customization offers unparalleled adaptability to organizational requirements. The system's ability to connect to accounting or payment systems ensures that financial data are constantly exchanged. In essence, the extensive set of tools in the Admin Module not only simplifies administrative tasks but also lays the groundwork for an expense reimbursement procedure that is more effective, accurate, and adaptable. The system has the potential to improve user satisfaction, compliance, and transparency as we proceed, ultimately increasing the efficiency of our financial management procedures. Machine learning algorithms could be incorporated into the automated expense reimbursement procedure, which would be an exciting addition. Employees would be able to save valuable time by using these algorithms to automatically analyze and classify expense receipts. They could also check the receipts to make sure they are accurate and find any potential mistakes or false claims. The creation of a mobile app that is easy to use and can be used in other settings like schools, colleges, institutes, business organizations, and so on is another feature to take into consideration. Policies within an organization can be used to modify application features.

REFERENCES

- Amanda Wilson, "The Role of Cloud Technology in Streamlining Expense Reimbursement Processes", (2018).
- Andrew White, "Best Practices for Choosing an Automated Expense Management System", (2018)
- Chris Taylor, "The Impact of Automation on Employee Satisfaction in Expense Reimbursement", (2020)
- David Wilson, "Cutting Costs and Errors: Implementing Automated Expense Management Systems", (2019)
- Emily Brown, "Maximizing Efficiency: The Benefits of Automated Expense Reimbursement", (2020)
- Kevin Johnson, "Overcoming Resistance to Change: Strategies for Implementing Automated Expense Reimbursement", (2019)
- Manikandan SRIDHARAN, Delphin Carolina RANI ARULANANDAM, Rajeswari K Chinnasamy, Suma Thimman, Sivabalaselvamani Dhandapani, "Recognition of Font and Tamil Letter in Images Using Deep Learning", *Applied Computer Science*, vol. 17, no. 2, pp. 90–99, 2021
- Mark Robinson, "The Evolution of Expense Reimbursement: From Manual to Automated Processes" by (2017)
- Michael Johnson, "Streamlining Expense Processes with Automation", (2021)
- Michelle Brown, "Increasing Transparency and Accountability Through Automated Expense Reporting", (2020)
- Murali N, Murugan SP, Sivakumar K, Vivekanandan M, Sushith M, Manikandan S. Smart Commodities Public Distribution System using IoT. *Salud, Ciencia y Tecnología - Serie de Conferencias* [Internet]. 2024
- Rachel Lee, "Ensuring Data Security in Automated Expense Reimbursement Systems", (2019)
- S. Manikandan, P. Dhanalakshmi, K. C. Rajeswari and A. Delphin Carolina Rani, "Deep sentiment learning for measuring similarity recommendations in twitter data," *Intelligent Automation & Soft Computing*, vol. 34, no.1, pp. 183–192, 2022
- Saradhi Thommandru V, Suma T, Odilya Teena AM, Muthukrishnan A, Thamaraikannan P, Manikandan S. Intelligent Optimization Framework for Future Communication Networks using Machine Learning. *Data and Metadata* [Internet]. 2024 Apr. 18 [cited 2024 Apr. 21]; 3:277
- Sarah Garcia, "Improving Compliance and Accuracy with Automated Expense Reimbursement", (2018)